

# Makita®

## ARE YOU COMPLIANT? SILICA DUST CONTROL



### 12 GALLON WET/DRY VACUUM VC4710

Includes:  
(1) Main Flat Filters, 2/pk, (1) 1-3/8" x 16' Anti-Static Hose, (1) Crevice Nozzle, (1) Replacement Cuff, (1) Fleece Nano Filter Bag, (1) Disposable Bag



Setting a new standard for jobsite vacuums with dust extraction!



Main Flat HEPA Filters (Pair)  
P-79859  
for the VC4710

### 2.1 GAL. DRY VACUUM (TOOL ONLY) XCV04Z

Includes:  
Straight pipe, bending pipe, corner nozzle, hose complete 38-2.5 set, powder filter h set, poly dust bag set, damper, nozzle ass'y, hose complete 28-3.5 set, prefilter

Delivers 127 CFM, 65 Min.  
run time, Three stage  
filtration system

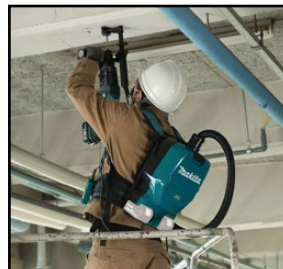


Corded/cordless, runs for 65 minutes on low. Perfect for flat open spaces.

### 1/2 GALLON HEPA FILTER BACKPACK VACUUM XCV05Z

Includes:  
Filter Bag Set, Hepa Filter, Hose Band, Floor Nozzle, Nozzle Set, Bent Pipe Ass'y, Telescopic Pipe Ass'y, Hose Cpl. 28-1.0

Up to 90 min of use, 53 CFM  
suction Power, Efficient HEPA Filter



Attach to any dust port enabled Makita Tool for perfect cordless clean up.

715.835.4334 • 800.533.0909 • [www.farrellequipment.com](http://www.farrellequipment.com)

FARRELL EQUIPMENT & SUPPLY CO., INC. • 1510 N. HASTINGS WAY • EAU CLAIRE, WI 54703



## DUST EXTRACTION ATTACHMENTS

### SURFACE / PLANING



REPLACEMENT  
BRUSH SETS  
AVAILABLE

- 195236-5 4-1/2" - 5" Grinding Shroud . . . . . For Makita 4-1/2" - 5" Grinders  
195386-6 7" Grinding Shroud . . . . . For Makita 7" & 9" Grinders

### CUTTING



- 193794-5 5" Cutting Guard . . . . . For Makita 4-1/2" - 5" Grinders except 9005B  
192618-2 5" Cutting Guard without Shoe . . . . . For Makita 4-1/2" - 5" Grinders except 9005B  
193449-2 Drywall Cut-Out Tool Guard . . . . . For Makita Drywall Cut-Out Tool XOC01, 3706

### TUCK POINTING



- 196846-1 5 in. Dust Extraction Tuckpointing Guard . . . . For Makita 4-1/2" - 5" Grinders except 9005B  
196845-3 5 in. Dust Extraction Tuckpointing Guard . . . . For Makita 4-1/2" - 5" SJSII™ Grinders Only

- W6084 Crevice Nozzle  
P-70421 Cut Adapter Hose . . . . . P-79865  
P-70415 Cut Adapter Hose . . . . . P-70487  
P-70378 Quick Connect Adapter  
P-70384 Quick Connect Cuff  
P-70312 Floor Set (8pc.)

## SILICA DUST REGULATION CLASSES

Classes are Free ■ Space is Limited ■ Register @ [Farrellequipment.com](http://Farrellequipment.com)

**7:30am - 9am with time for Q&A.**

- Eau Claire - February 13th, 2017  
La Crosse - February 14th, 2017  
Madison - February 15th, 2017  
Appleton - February 16th, 2017  
Wausau - February 17th, 2017

Learn more and register online at:  
[www.farrellequipment.com/osha-silica-rules-classes](http://www.farrellequipment.com/osha-silica-rules-classes)

Farrell Equipment & Supply will be hosting OSHA Specialists to discuss the new Silica Dust exposure standards.

This presentation will discuss key points to the new standards such as:

- Implementation dates
- Exposure limits
- Medical surveillance
- Engineering controls
- Exposure assessments

There will also be time to answer all the questions you may have.



**GET UP TO DATE ON THE LATEST OSHA STANDARDS!**

## DUST EXTRACTION FOR HAMMER DRILLS



195173-3

**DUST EXTRACTION CUP FOR HAMMERS**  
HR2611F, XRH01, HR2631F



193472-7

**DUST COLLECTION ATTACHMENT**

FOR HAMMERS:  
BHR202, BHR24, HR1830F, HR2470F, HR2475, HR2811F, HRH01H, RH01ZX2



196074-8

**DUST COLLECTION ATTACHMENT**

FOR HAMMERS:  
HR4001C, HR4002C, HR4010C, HR4510C, HR4013C, HR5212C



196074-8

**DUST COLLECTION ATTACHMENT**

FOR HAMMERS:  
HR4001C, HR4002C, HR4010C, HR4510C, HR4013C, HR5212C



196571-4

**DUST COLLECTION ATTACHMENT**

FOR HAMMERS:  
HM0870C, HM1111C, HM1203C, HM1214C, HR4002, HR5212C



# Farrell Equipment & Supply Co., Inc.

**EAU CLAIRE**  
715-835-4334  
800-533-0909  
Fax: 715-835-4356  
1510 N. Hastings Way  
Eau Claire, WI 54703

**APPLETON**  
920-903-1985  
Fax: 920-903-8278  
1002 Truman Street  
Kimberly, WI 54136

**LA CROSSE**  
608-796-9300  
888-533-0909  
Fax: 608-796-9435  
508 Monitor Street  
La Crosse, WI 54603

**MADISON**  
608-222-5372  
888-533-7909  
Fax: 608-222-5405  
6809 Mangrove Lane  
Monona, WI 53713

**ROCHESTER**  
507-252-0234  
888-533-8909  
Fax: 507-252-0222  
1635 3rd Avenue S.E.  
Rochester, MN 55904

**WAUSAU**  
715-355-8300  
800-933-5939  
Fax: 715-298-1662  
7405 Commerce Drive  
Weston, WI 54476

Find us online: [www.FarrellEquipment.com](http://www.FarrellEquipment.com)

