

# FARRELL

EQUIPMENT & SUPPLY CO., INC.

YOUR TRUSTED SOURCE FOR POWER TOOLS

## FREE BATTERIES

WITH TOOL PURCHASE

PAGE 2, 4, 5, 6

## FARRELL SELECT POWER TOOLS

VOL. 1

BATTERIES, TOOLS  
ACCESSORIES



2 **Makita**

5 **Milwaukee**

7 **FESTOOL**

8 **SawStop**

9 **BOSCH**

12 **DEWALT**



KITS, BARE TOOLS,  
CORDLESS SAWS

**JOBSITE  
RADIOS  
POWERBOX  
PAGE 11**



**BOSCH**

**LIGHTING  
LED STAND  
PAGE 7**



**Milwaukee**

**BLADES  
& BITS  
PAGE 3**



Pg. 10



Pg. 10

**Makita**



~~\$129.99~~

REG.



~~\$119.99~~

MAKXDT042 or MAKXDT111

### IMPACT DRIVER KIT

18V LXT® LITHIUM-ION

Includes:

(1) 18V LXT® Lithium-Ion 3.0Ah Battery, (1) Rapid Optimum Charger, (1) 18V LXT® Impact Driver, (1) Tool Case

~~\$129.99~~

REG.



~~\$119.99~~

MAKXPH012 or MAKXPH102

### 1/2" HAMMER DRIVER-DRILL KIT

18V LXT® LITHIUM-ION

Includes:

(1) 18V LXT® Lithium-Ion 3.0Ah Battery, (1) Rapid Optimum Charger, (1) Tool Case

~~\$59.99~~

GM00001381

TRIPOD STAND-  
FOR THE DML805



~~\$109.99~~

DML805

### 20 L.E.D. FLOOD LIGHT

18V LXT® CORDLESS/CORDED

## COMBO KITS DEALS



**RECEIVE A FREE BATTERY  
WHEN YOU BUY KIT 1, 2, OR 3**

BRUSHLESS

LXT  
LITHIUM-ION

1

~~\$239.99~~

CX200RB

BUY A KIT



ALREADY AT  
REDUCED PRICE!

(2) 4.0 AH Battery  
40 Min Charge Time



+ x1  
BL1840B

GET 1 FREE

### Driver-Drill/ Impact Driver (2.0AH)

18V LXT® LITHIUM-ION BRUSHLESS CORDLESS

Includes:

(1) 1/2" Driver-Drill, (1) Impact Driver, (2) 18V LXT Lithium-Ion Batteries, (1) Rapid Optimum Charger, (1) Tool Bag

BRUSHLESS

LXT  
LITHIUM-ION

2

~~\$299.99~~

MAKXT269M

BUY A KIT



ALREADY AT  
REDUCED PRICE!

(1) 5.0 AH Batteries,  
(1) Battery Attachments



+ x1  
ADP05



x1  
BL1850B

GET 2 FREE

### Hammer Drill / Impactor Kit (4.0AH)

18V LXT® LITHIUM-ION BRUSHLESS CORDLESS

Includes:

(1) 18V LXT® Brushless Hammer Driver-Drill, (1) 18V LXT® Brushless Impact Driver, (2) 18V LXT® Lithium-Ion 4.0Ah Batteries, (1) Rapid Optimum Charger, (1) Tool Case

BRUSHLESS

LXT  
LITHIUM-ION

3

~~\$399.99~~

XT328M

BUY A KIT



ALREADY AT  
REDUCED PRICE!

(2) 4.0 AH Batteries  
40 Min Charge Time



+ x1  
BL1840B-2

GET 2 FREE

### 3 Tool Combo Kit

18V LXT® LITHIUM-ION BRUSHLESS CORDLESS

Includes:

(1) 18V LXT Brushless Hammer Driver-Drill, (1) 18V LXT Brushless Impact Driver, (1) 18V LXT Brushless Recipro Saw, (2) 18V LXT Lithium-Ion 4.0Ah Batteries, Rapid Optimum Charger, Tool Bag



**CARBIDE BITS/  
DEMOLITION STEEL**



**SDS-PLUS CARBIDE DRILL BITS**

**GREAT DEALS ON SDS-PLUS BITS**

| DIA   | USABLE | OVERALL LENGTH |            |        |
|-------|--------|----------------|------------|--------|
| 5/32" | 4"     | 6-1/4"         | MAKD-00810 | \$1.99 |
| 3/16" | 2"     | 4-1/2"         | MAKD-00826 | \$1.99 |
| 3/16" | 4"     | 6-1/4"         | MAKD-00832 | \$1.99 |
| 3/16" | 6"     | 8-1/4"         | MAKD-00848 | \$2.59 |
| 7/32" | 4"     | 6-1/4"         | MAKD-00854 | \$2.59 |
| 1/4"  | 2"     | 4-1/2"         | MAKD-00860 | \$2.59 |
| 1/4"  | 4"     | 6-1/4"         | MAKD-00876 | \$1.99 |
| 1/4"  | 6"     | 8-1/4"         | MAKD-00882 | \$2.59 |
| 5/16" | 4"     | 6-1/4"         | MAKD-00907 | \$2.59 |
| 3/8"  | 4"     | 6-1/4"         | MAKD-00929 | \$3.99 |
| 3/8"  | 10"    | 12-1/4"        | MAKD-00935 | \$4.79 |
| 1/2"  | 4"     | 6-1/4"         | MAKD-00963 | \$3.99 |
| 1/2"  | 10"    | 12-1/4"        | MAKD-00979 | \$4.79 |
| 5/8"  | 6"     | 6"             | MAKD-01002 | \$4.79 |

**SDS-PLUS DEMOLITION STEEL**



**10" BULL POINT** D-51144 **\$13.99**



**3/4" X 10" FLAT CHISEL** D-51150 **\$13.99**



**SCALING CHISEL** 2" X 8-1/2" D-51166 **\$17.99**

**\$119.99** ~~**\$179.99**~~  
REG.

BL1830B-2

**3.0Ah Battery  
2 Pack**

18V LXT Lithium-ion



**ROTARY & BREAKER HAMMERS**



ACCEPTS SDS-PLUS BITS

**REGULARLY \$189.99**



**\$169.99**

HR2475

**1" ROTARY HAMMER**  
ACCEPTS SDS-PLUS BITS

Includes:  
(1) Side Handle, (1) Depth Gauge,  
(1) Hammer Bit Grease, (1) Plastic  
Tool Case



ACCEPTS SDS-MAX BITS

**REGULARLY \$389.99**



**\$359.99**

HR4002

**1-9/16" ROTARY HAMMER**  
ACCEPTS SDS-MAX BITS

Includes:  
(1) Side Handle, (1) Depth Gauge, (1)  
Hammer Bit Grease, (1) Plastic Tool Case

**REGULARLY \$1,899.99**



**\$1,849.99**

HM1812X3

**70 LB. ADVANCED AVT  
BREAKER HAMMER**

ACCEPTS 1-1/8" HEX BITS

Includes:  
(1) Hex Wrench, (1) Premium Hammer Cart,  
(2) 1-1/8" x 20-1/2" Flat Chisel, 1-1/8" Hex,  
(2) 16" Self Sharpening Bull Point, 1-1/8" Hex



**14" POWER CUTTER SAW**

**FREE BLOWER WITH SAW PURCHASE!**



**\$1,199.99**

EK7651H

**14" 75.6 CC 4S POWER CUTTER**

Includes:  
(1) Torx Wrench, (1) Screwdriver, (1) Adapter Ring  
(20mm to 1"), (1) Water Supply Kit, (1) 13/16  
Wrench, (1) Oil Bottle, (1) Tool Kit



**FREE BLOWER!**

**\$189.99**

VALUE

BHX2500CA

**MM4® BLOWER**

**4 STROKE ENGINE, 24.5 CC**

**Trade Customs**

Every endeavor has been made to have the latest lists, dimensions, descriptions and design throughout this catalog, but we do not guarantee accuracy. If any errors or misprints have escaped our checkers and printers, we are not responsible for them, and they are subject to our correction. All information contained in this catalog, pertaining to strengths and proper working loads of material, tools or machines is derived from information compiled by the manufacturers for the convenience of the buyer. We assume no responsibility for the accuracy of this information. We are not responsible for printing errors in prices. Prices subject to change at any time. Illustrations are subject to modification. All references in this catalog are for description only and are not representations or warranties of any kind or nature. Copyright © 2017 by Farrell Equipment & Supply, Inc.

## BARE TOOL DEALS



XDT14Z



XSC02Z



**FREE**

**RECEIVE 2 BATTERIES FREE**

**WHEN YOU PURCHASE 2 BARE TOOLS HERE!**

**(1) 4.0AH BATTERY TWIN PACK**

18V LXT® LITHIUM-ION

**BRUSHLESS**



INCLUDES - Grinding wheel, cut-off wheel, wheel guard and cut-off wheel guard



KIT OPT.

**\$399.99**

XAG10M

BARE TOOL

**\$169.99**

XAG10Z

**4-1/2" PADDLE SWITCH CUT-OFF/ANGLE GRINDER WITH ELECTRIC BREAK**

BARE TOOL

KIT OPT.

**\$289.99**

XDT14M

**Quick-Shift Mode™**  
finds balance of  
speed and torque for  
each application



**\$144.99**

XDT14Z

**QUICK-SHIFT MODE™  
3-SPEED IMPACT DRIVER**

BARE TOOL

KIT OPT.

**\$309.00**

XDT12M

**\$186.99**

XDT12Z

**QUICK-SHIFT MODE™  
4-SPEED IMPACT DRIVER**

BARE TOOL

KIT OPT.

**\$459.99**

XWT07M

**High-Torque  
3 Speed Impactor**



**\$249.99**

XWT08Z

**1/2" SQ. DRIVE IMPACT  
WRENCH (TOOL ONLY)**

BARE TOOL

KIT OPT.

**\$399.99**

XRJ05M



**\$199.99**

XRJ05Z

**RECIPROCATING SAW**

BARE TOOL

KIT OPT.

**\$435.99**

XSC02T



**\$199.99**

XSC02Z

**5-7/8" METAL CUTTING SAW**

BARE TOOL

KIT OPT.

**\$533.99**

XBP02TX



**\$319.99**

XBP02Z

**PORTABLE BAND SAW**

BARE TOOL

KIT OPT.

**\$419.99**

XRJ06M



**\$229.99**

XRJ06Z

**RECIPROCATING SAW**

BARE TOOL

KIT OPT.

**\$379.99**

XSH03MB



**\$199.99**

XSH03Z

**6-1/2" CIRCULAR SAW**

BARE TOOL

KIT OPT.

**\$429.99**

XBP01T



**\$229.99**

XBP01Z

**COMPACT BAND SAW KIT**

**DRILLS**

**FREE EXTRA  
5.0 BATTERY**



**\$299.99**

MIL01-2753-22

**1/4" IMPACT DRIVER KIT**  
M18 FUEL 18-VOLT LI-ION BRUSHLESS

Includes:  
(2) REDLITHIUM XC 5.0 batteries, (1) M12-M18 multi-voltage charger, (1) Carrying Case

**FREE EXTRA  
5.0 BATTERY**



**\$299.99**

MIL01-2704-22

**1/2" HAMMER DRILL/DRIVER KIT**  
M18 FUEL 18-VOLT LI-ION BRUSHLESS

Includes:  
(2) REDLITHIUM XC 5.0 batteries, (1) M12-M18 multi-voltage charger, (1) Carrying Case

**FREE EXTRA  
5.0 BATTERY**



**\$369.99**

MIL01-2897-22

**HAMMER DRILL/IMPACT  
DRIVER COMBO KIT**  
M18 FUEL 18-VOLT LI-ION BRUSHLESS

Includes:  
(1) 1/2 in. hammer drill, (1) 1/4 in. hex impact driver, (2) REDLITHIUM XC 5.0 batteries, (1) M12-M18 multi-voltage charger, Case

**ANGLE GRINDERS**



**CORDED**

■ 7 in. & 9 in. Type 27 Guard  
Included for disc changes.



**\$119.99**

6117-30

**5" ANGLE GRINDER WITH  
LOCK-ON PADDLE SWITCH**  
13 AMP



**\$149.99**

6088-30

**7/9" ANGLE GRINDER WITH  
LOCK-ON PADDLE SWITCH**  
15 AMP



**RECIPROCATING SAWS**



■ Wood, metal, and multi-material  
cutting Sawzall blades.



**\$289.99**

MIL01-2720-21

**RECIPROCATING SAW KIT**  
M18 18-VOLT LITHIUM-ION CORDLESS

Includes:  
(1) M18 FUEL™ SAWZALL® Recip Saw,  
(1) M18™ REDLITHIUM™ XC5.0 Extended Capacity Batteries, (1) M18™ & M12™ Charger, (1) Blade, (1) Carrying Case



**\$179.99**

MIL01-6536-21

**13 AMP SUPER SAWZALL  
RECIPROCATING SAW**

■ Corded, Orbital Cutting Action.



**GREAT  
VALUE!**

**\$19.99**

12 PACK

49-22-1129

**SAWZALL RECIP BLADES**

Includes:  
(4) 6" 18 TPI torch blades, (2) 6" 8 TPI wrecker blades, (2) 6" 5/8 TPI ax blades, (2) 9" 5/8 TPI ax blades, (2) 9" 14 TPI torch blades, (1) Container



## BARE TOOLS DEALS



## AMAZING DEALS!



**BONUS STARTER KIT**

**BATTERY STARTER KIT + M18 FUEL SAWZALL**  
MIL02-48-59-1890PS

~~\$249.99~~



**BONUS STARTER KIT**

**BATTERY STARTER KIT + M18 FUEL 7-1/4" CIRCULAR SAW**  
MIL02-48-59-1890PC

~~\$249.99~~

**BARE TOOL**

KIT OPT. ~~\$289.99~~ 2780-21



~~\$169.99~~ **\$149.99**  
REG. 2780-20

**4-1/2 IN./5 IN. GRINDER, PADDLE SWITCH NO-LOCK**

**BARE TOOL**

KIT OPT. ~~\$409.99~~ 2763-22



Provides 700 ft. lbs. TORQUE

~~\$219.99~~ **\$199.99**  
REG. 2763-20

**1/2" HIGH TORQUE IMPACT WRENCH W/ FRICTION RING**

**BARE TOOL**

KIT OPT. ~~\$429.99~~ 2707-22



~~\$249.99~~ **\$229.99**  
REG. 2707-20

**HOLE HAWK 1/2 IN. RIGHT ANGLE DRILL**

**BARE TOOL**

KIT OPT. ~~\$289.99~~ 2730-21



~~\$199.99~~ **\$179.99**  
REG. 2730-20

**6-1/2" CIRCULAR SAW**  
18V LXT BRUSHLESS

**BARE TOOL**

KIT OPT. ~~\$319.99~~ 2731-21



~~\$229.99~~ **\$209.99**  
REG. 2731-20

**7-1/4" CIRCULAR SAW**  
18V LXT BRUSHLESS

**BARE TOOL**

KIT OPT. ~~\$459.99~~ 2729-21



~~\$329.99~~ **\$299.99**  
REG. 2729-20

**DEEP CUT BAND SAW**  
18V LXT BRUSHLESS

**BARE TOOL**



~~\$299.99~~ **\$269.99**  
REG. 2712-20

KIT OPT. ~~\$499.99~~ 2712-22

**1" SDS PLUS ROTARY HAMMER**  
18V LXT BRUSHLESS

**BARE TOOL**



~~\$349.99~~ **\$309.99**  
REG. 2715-20

KIT OPT. ~~\$524.99~~ 2715-22

**1-1/8" SDS PLUS ROTARY HAMMER**  
18V LXT BRUSHLESS

**BARE TOOL**



~~\$499.99~~ **\$449.99**  
REG. 2717-20

KIT OPT. ~~\$759.99~~ 2717-22HD

**1-9/16" SDS MAX HAMMER DRILL**  
18V LXT® LITHIUM-ION CORDLESS



**\$109.99**

MIL04-49-22-4175

**15-PIECE  
HOLE SAW KIT**

Kit Includes: Eleven (11) hole saws: 3/4", 7/8", 1", 1-1/8", 1-3/8", 1-1/2", 1-3/4", 2", 2-1/8", 2-1/4", 2-1/2"; (2) arbors: 49-56-7010, 49-56-9100; (2) drill bits: 49-56-8010; (1) adapter, (1) spacer



**\$14.99**

MIL02-48-32-4004

**32 Pc. DRIVER BIT SET**

(1) Magnetic Bit Holder, (1) 5/16" Magnetic Nut Driver, (1) Hex Bit 1" 1/4", (1) Hex Bit 1" 3/16", (1) Phillips Bit 1" P1, (4) Phillips Bit 1" P2, (1) Phillips Bit 1" P3, (2) Phillips Bit 2" P2, (1) Phillips Reduced 1" PR2 Bit, (1) Slotted 1" #10 Bit, (1) Slotted 1" #8 Bit, (1) Slotted 2" #10 Bit, (1) Square Bit 1" SQ1, (3) Square Bit 1" SQ2, (1) Square Bit 1" SQ3, (1) Square Bit 2" SQ2, (1) TORX® Bit 1" T15, (2) TORX® Bit 1" T20, (2) TORX® Bit 1" T25, (1) TORX® Bit 1" T30, (1) TORX® Bit 2" T20, (1) TORX® Bit 2" T25, (1) 1/4" Magnetic Nut Driver

**M18™ TRUEVIEW  
LED STAND LIGHT**

Sets up in five seconds. 3 light modes with up to 2000 lumens of light output

**\$229.99**

2130-20



**DOMINO / EXTRACTOR COMBO**



**\$756.00**

FES01-583493

**CT 36 HEPA Dust Extractor**

- Automatic Tool Start & adjustable suction with tool triggered or manual on-off switch. Can be used wet or dry.
- Supplied with 11-1/2 foot long anti-static hose that is flexible and kink-resistant.

We carry a wide variety of Festool dust extractors in stock, including:

- CT MINI Dust Extractor - FES01-584156
- CT 36 AC Dust Extractor - FES01-584014
- CT 48 HEPA Dust Extractor - FES01-584084
- CT MIDI Dust Extractor - FES01-584165
- CT 26 HEPA Dust Extractor - FES01-583492



FES01-583492



FES01-584156



**\$990.00**

FES01-574432



**DF 500 Domino Joiner Set**

- Mortise width adjustment with the turn of a dial.
- Pivoting Fence allows you to create angled mortises from 0-90° with positive stops at 22.5°, 45°, 67.5°.
- Indexing pins for quick alignment against the edge of the workpiece for accurate placement.

**Always in stock: Festool Domino Tenons.**

Suitable for both plywood and solid wood applications, the dense beech tenon will not expand or telegraph through material, leaving you with clean, flat, and consistent surfaces.



**GREASE & CAULK GUNS**



- Features an LED light, lock-on/lock-off trigger, & plunger rod.



~~\$269.99~~ **\$239.99**

REG.

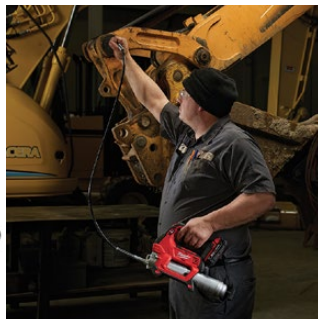
2646-21CT

**2-SPEED GREASE GUN KIT**

M18 18-VOLT LITHIUM-ION CORDLESS

Includes:

- (1) M18 2-speed grease gun, (1) M18 REDLITHIUM compact battery, (1) M18/M12 multi-voltage charger, (1) carrying case, (1) shoulder strap, (1) 48 in. flex hose with spring guard & high-pressure grease coupler



- 200 tubes of 10 oz. adhesive dispensed per charge.



**\$279.00**

2641-21CT

**10 OZ. CAULK GUN KIT**

M18 18-VOLT LITHIUM-ION CORDLESS

Includes:

- (1) M18 18-Volt Lithium-Ion Cordless 10 oz. Caulk and Adhesive Gun, (1) M18 REDLITHIUM Battery, (1) Multi-voltage Charger, (1) Carrying Case



## CORDED JOBSITE SAWS



**\$1,475.00**

FES01-561287

### Kapex KS120 EB Miter Saw

Effective dust extraction, precise cuts, easy adjustments, and quality components are some of the features that should make this saw the number one choice of professional tradesmen.



⊕ Portable Stand



For the Kapex Miter Saw

**\$914.00**

FES02-497354

- Convenient, collapsible design for transport of Festool Kapex miter saw.
- Supports material up to 94-1/2 inches in length.
- Includes flag stop for repeat cuts.



**\$660.00**

FES01-574683

### TS 55 REQ-F-Plus Plunge Cut Track Saw

When used with Festool guide rails, you can achieve perfectly straight and splinter-free cuts.

## PROFESSIONAL SAWS



**\$1,299.99**

### JOBSITE SAW - 10" SAW01-JSS-MCA

WITH MOBILE CART & FENCE SYSTEM

A bench top saw and a contractor's saw in terms of size. Includes a pedal-actuated folding stand. The 8" wheels act as a dolly.



**\$1,449.00**

SAW05-CNS175

### CONTRACTOR SAW - 10"

1.75 HP, 110V - **SAW ONLY**

Meets the demands of the avid hobbyist in a home setting. Delivering the peerless fit and finish of the Cabinet Saw. Legendary safety system, uncompromising quality and industry-leading dust collection.



**\$2,119.00**

SAW04-PCS175

### PROFESSIONAL CABINET SAW - 10"

1.75 HP, 110V, SINGLE PHASE - **SAW ONLY**

Engineered to fit the unique demands of the avid hobbyist in a home setting. Delivering the peerless fit and finish of the Professional.



**\$3,449.00**

SAW03-ICS31230

### INDUSTRIAL CABINET SAW - 10"

3 HP, 230V, SINGLE PHASE - **SAW ONLY**

The heaviest, most powerful and highest quality 10 in. Cabinet Saw available on the market. Includes a 52" Industrial T-Glide fence assembly.



**DRILLS**

**BOSCH**

■ Durable, heavy-duty chuck for better bit retention.



**\$279.99**

BOS01-IDH182-01

**1/4\"/>**

- Includes:
- (1) 18V EC Brushless Impact Driver,
  - (2) 18V Lithium-Ion 4.0 Ah FatPack Batteries,
  - (1) 18V Charger, (1) Double-Ended Bit,
  - (1) Belt Clip, (1) Soft Bag



**\$269.99**

DDH181X-01

**1/2\"/>**

- Includes:
- (2) 18V Lithium-ion FatPack Batteries, (1) 18V Charger, (1) Carrying Bag, (1) Auxiliary Handle, (1) Double-Sided Philips® Drive Bit



**\$199.99**

CLPK232A-181

**COMBO KIT (2-TOOL)**  
20-VOLT MAX LLI-ION BRUSHLESS

- Includes:
- (1) Compact Tough™ 1/2 In. Drill/Driver
  - (1) 1/4 In. Hex Impact Driver
  - (1) Fast Battery Charger
  - (2) 2.0 Ah SlimPack Batteries
  - (1) Carrying Bag

**ROTARY HAMMERS**

**BOSCH**

■ One of the most powerful, rotary hammers on the market.



**\$774.99**

11316EVS

**SDS-MAX  
DEMOLITION HAMMER**



**\$179.99**

11255VSR

**1\"/>**

**\$529.99**

GBH18V-26K24

**1\"/>**

- Includes:
- (1) 1\"/>



**\$279.99**

BOS01-RH328VC

**1-1/8\"/>**



**\$589.99**

BOS01-11264EVS

**1-5/8\"/>**



**\$389.99**

BOS01-RH540M

**1-9/16\"/>**

## WOODWORKING

## BOSCH



**\$149.99**

BOS01-JS470E

TOP-HANDLE JIG SAW



**\$219.99**

BOS01-1617EVSPK

2.25 HP COMBINATION  
PLUNGE- AND FIXED-BASE  
ROUTER



**\$169.99**

GOP40-30B

30 PC. MULTI-TOOL KIT  
STARLOCKPLUS®

Includes:

- (1) Oscillating Multi-Tool, (1) 1-1/4 In. Plunge Blade, (1) 1-1/4 In. Xtra-Clean Plunge Blade, (1) 3-1/2 In. Segment Blade, (1) Sanding Pad, (25) Sanding Sheets, (1) Accessory Box, (1) Carrying Bag

## STOCK UP ON DIAMOND GRINDING DISCS

Single Row



4" x 5/8-11 Single Row

**\$39.99**

HUS04-FA04HDDSDX1

7" x 5/8-11 Single Row

**\$59.99**

HUS04-FA07GDDSDX1

Double Row



4" x 5/8-11 Double Row

**\$59.99**

HUS04-FA04GDDDX1

7" x 5/8-11 Double Row

**\$79.99**

HUS04-FA07HDDDX1

Turbo



4" x 5/8-11 Turbo

**\$59.99**

HUS04-FA04HDDGDGX2

7" x 5/8-11 Turbo

**\$79.99**

HUS04-FA07HDDGDGX2



## GREAT DEALS ON SAWZALL BLADES - 5 Packs



|                  |  |                                 |                                 |   |                                 |
|------------------|--|---------------------------------|---------------------------------|---|---------------------------------|
| ALL PURPOSE      | All wood, plastics, ferrous & non-ferrous metals:  |                                 | WOOD                            | Fast cut, nail embedded wood, general roughing-in:  |                                 |
|                  | 6" 8/12 TPI  | MIL03-48-00-5091 <b>\$8.99</b>  |                                 | 6" 5/8 TPI  | MIL03-48-00-5031 <b>\$10.99</b> |
|                  | 8" 8/12 TPI  | MIL03-48-00-5093 <b>\$11.99</b> |                                 | 9" 6 TPI  | MIL03-48-00-5036 <b>\$13.99</b> |
|                  | 12" 8/12 TPI   | MIL03-48-00-5094 <b>\$17.99</b> | 12" 6TPI                        | MIL03-48-00-5037 <b>\$15.99</b>   |                                 |
| WOOD/<br>PLASTIC | Very fast cutting wood, plastics & pruning:  |                                 | WOOD/<br>METAL<br>RESCUE        | Excellent for plunge cutting into wood and nail:  |                                 |
|                  | 6" 6TPI  | MIL03-48-00-5015 <b>\$13.99</b> |                                 | 6" The Ax   | MIL03-48-00-5021 <b>\$12.99</b> |
|                  | 9" 6 TPI   | MIL03-48-00-5016 <b>\$17.99</b> |                                 | 9" The Ax   | MIL03-48-00-5026 <b>\$15.99</b> |
|                  |  |                                 | 12" The Ax                      | MIL03-48-00-5027 <b>\$18.99</b>   |                                 |
| METAL            | Metal 3/16" thru 1/4", Conduit, Tubing, Channels, Pipe, Rubber, Fiber - 14 Teeth per Inch: |                                 | RESCUE/<br>DEMO                 | All woods, nails, composition material, plastic, light gauge non-ferrous metals and aluminum. |                                 |
|                  | 6" Super   | MIL03-48-00-5182 <b>\$8.99</b>  |                                 | 6" Wrecker  | MIL03-48-00-5701 <b>\$11.99</b> |
|                  | 9" Super   | MIL03-48-00-5187 <b>\$10.99</b> |                                 | 9" Wrecker  | MIL03-48-00-5706 <b>\$15.99</b> |
|                  | Metal 1/8" thru 3/16", Conduit, Tubing, Channels, Pipe -18 Teeth per Inch:                 |                                 |                                 | Metal 1/4" thru 3/8" Channels, Metal Pipe, Cast iron - 10 Teeth per Inch:                     |                                 |
|                  | 6" Super   | MIL03-48-00-5184 <b>\$8.99</b>  |                                 | 6" Torch  | MIL03-48-00-5712 <b>\$12.99</b> |
|                  | 9" Super   | MIL03-48-00-5188 <b>\$10.99</b> |                                 | 9" Torch  | MIL03-48-00-5713 <b>\$16.99</b> |
|                  | Metal thinner than 1/8", Tubing, Pipe :  |                                 |                                 | Metal 3/16" thru 1/4" - 14 Teeth Per Inch   |                                 |
| 6" - 24 TPI      | MIL03-48-00-5186 <b>\$8.99</b>   | 6" Torch                        | MIL03-48-00-5782 <b>\$12.99</b> |   |                                 |
| 12" - 18 TPI     | MIL03-48-00-5189 <b>\$13.99</b>  | 9" Torch                        | MIL03-48-00-5787 <b>\$16.99</b> |   |                                 |

**ANGLE GRINDERS**

**BOSCH**

■ Reduces vibration up to 60%, providing uncompromising user comfort.

\*Wheel Not Included



**\$174.99**

BOS01-1893-6

**9" ANGLE GRINDER**  
15 AMP, WITH RAT TAIL HANDLE

■ Comprehensive guard/shroud system – with exclusive guard-opening system that allows flush grinding.



**Protect yourself from Silica Dust!**

**\$369.99**

CSG15

**5" CONCRETE SURFACING GRINDER WITH DEDICATED DUST-COLLECTION SHROUD**



**PORTABLE SAWS**

**BOSCH**



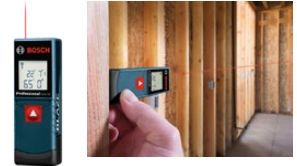
REG. ~~\$629.99~~  
**\$589.99**

BOS01-4100-09



**10" WORKSITE TABLE SAW**  
WITH GRAVITY RISE™ WHEELED STAND

Includes:  
(1) Gravity Rise™ Table Stand, (1) 10 In. 40-Tooth Carbide-Tipped Saw Blade, (1) Standard Throat Plate Table Insert, (1) Smart Guard System, (1) Rip Fence, (1) Miter Gauge, (1) Push Stick, (1) Blade Wrench, (1) Hex Adjustment Wrench



**\$49.99**

GLM20

**65 FT. LASER MEASURE**



**\$119.99**

GLM 50 CX

**BLUETOOTH**

**165 FT. LASER MEASURE**



**\$119.99**

BOS01-CS10

**7-1/4 IN. 15 AMP CORDED CIRCULAR SAW**  
CAST MAGNESIUM FOOTPLATE



**\$239.99**

CRS180-B14

**COMPACT RECIPROCATING SAW - 5.0 AH KIT**  
18-VOLT LITHIUM-ION



REG. ~~\$219.99~~ **\$199.99**

BOS01-PB360C

**POWERBOX RADIO/CHARGER**  
**BLUE-TOOTH STEREO**



## DRILLS

- Variable speed reduces air bubbles when mixing mud and greater control when drilling.



**\$179.99**

DW130V

1/2" SPADE HANDLE DRILL

## DEWALT



**\$229.99**

DEWDCD791D2

**COMPACT DRILL/DRIVER KIT**  
20-VOLT MAX XR LI-ION BRUSHLESS

- Includes:  
(2) 5.0 Ah batteries, (1) Multi voltage charger,  
(1) Kitbox



**\$499.99**

DEWDCF899P2

**IMPACT WRENCH KIT W/  
DETENT ANVIL**

20-VOLT MAX XR LI-ION BRUSHLESS

- Includes:  
(2) 5.0 Ah batteries, (1) Multi voltage charger,  
(1) Kitbox

## ROTARY HAMMERS

## DEWALT

### CORDED



**\$219.00**

DEWD25263K

**1-1/8" D-HANDLE  
SDS HAMMER KIT**

- Includes:  
(1) Side Handle, (1) Depth Rod, (1) Kit Box



**\$449.99**

D25501K

**1-9/16" SDS MAX  
ROTARY HAMMER - 12 AMP**

- Includes:  
(1) Side Handle, (1) Depth Rod, (1) Kit Box



**\$659.99**

D25603K

**1-3/4 SDS-MAX COMBINA-  
TION HAMMER - 13.5 AMP**

- Includes:  
(1) Side Handle, (1) Depth Rod, (1) Kit Box

- Active Vibration Control reduces vibration.

### CORDLESS KITS



**\$629.99**

DCH273P2DH

**ROTARY HAMMER WITH DUST  
EXTRACTION ACCESSORY**  
20-VOLT MAX LITHIUM-ION

- Includes:  
(2) 5.0Ah Batteries, (1) Charger,  
(1) Side Handle, (1) Depth Rod, (1) Retractable  
Utility Hook, (1) Extractor, (1) HEPA Filter



**\$599.99**

DCH293R2

**1-1/8" L-SHAPE SDS PLUS  
ROTARY HAMMER KIT**  
20-VOLT MAX LITHIUM-ION

- Includes:  
(2) 40V MAX 6AH Li-Ion Batteries,  
(1) Fast Charger, (1) Hard Carrying Case



~~**\$799.99**~~ **\$749.99**

REG.

DEWDCH481X2

**1-9/16" COMBO HAMMER**  
FLEXVOLT 60-VOLT MAX LITHIUM-ION

- Includes:  
(2) 9.0Ah Flexvolt Batteries, (1) Charger,  
(1) Multi-Position Side Handle, (1) Heavy Duty  
Kitbox



**\$279.99**

DEWDCF887M2

**IMPACT DRIVER - 3 SPEED**  
20-VOLT MAX XR LI-ION BRUSHLESS

Includes:  
(2) 5.0 Ah batteries, (1) Multi voltage charger,  
(1) Kitbox



**\$399.99**

DEWDCK299P2

**COMBO KIT (2-TOOL)**  
20-VOLT MAX LI-ION BRUSHLESS

Includes:  
(1) 20V MAX\* XR 3-Speed 1/2" Hammerdrill  
(1) 20V MAX\* XR 1/4" Impact Driver,  
(2) 20V MAX\* XR Li-Ion Batteries (5.0Ah),  
(1) Charger, (2) Belt Hooks, (1) side handle,  
(1) Kit Box



**CORDLESS SAWS**



■ Runtime - Up to 289 cross cuts.



**\$829.99**

DEWDHS790AT2

**12" SLIDING MITER SAW KIT**  
FLEXVOLT 60-VOLT MAX LI-ION CORDLESS BRUSHLESS

Includes:  
(1) DHS 790 Miter Saw, (2) 60V MAX\* Lithium Ion Batteries,  
(1) Dual Port Fast Charger, (1) 120V MAX\* Corded Power Supply, (1) 12" Blade, (1) Blade Wrench, (1) Dust Bag



■ Cuts up to 4 in. SCH 40 pipe.



**\$519.99**

DCS374P2

**DEEP CUT BAND SAW KIT**  
20-VOLT MAX XR LITHIUM-ION BRUSHLESS

Includes:  
(1) 20V MAX\* Band Saw, (2) 20V MAX\* 5.0Ah batteries, (1) Charger, (1) Kit Box, (1) 18TPI Band Saw Blade

■ 4 Position blade clamp.



**\$269.99**

DCS367P1

**COMPACT RECIPROCATING SAW - 5.0 AH**  
20-VOLT LITHIUM-ION BRUSHLESS

Includes:  
20V MAX\* XR® Reciprocating Saw, (1) Li-Ion Battery (5.0 Ah), (1) Charger, (1) Kit Bag

**PORTABLE POWER STATION**

■ Compatible with 20V/60V MAX\* FLEXVOLT Batteries



**\$599.99**

DEWDCB1800M3T1

**BATTERY CHARGER/BLUETOOTH RADIO**



**\$199.99**

DEWDCR025

■ Bluetooth connectivity up to 100ft.





**DEWALT**  
FLEXVOLT

**POWER FREEDOM**  
OF CORDED. OF CORDESS.™



**\$519.99**

DEWDCS7485T1

### 8-1/4" TABLE SAW

FLEXVOLT 60-VOLT MAX LITHIUM ION  
CORDLESS BRUSHLESS

Includes:

- (1) 60V MAX\* Table Saw, (1) Carbide Blade
- (1) Push Stick, (1) Blade Guard, (1) Rip Fence, (1) Non-Thru Cut Riving Knife, (1) 20V/60V MAX\* FLEXVOLT Battery, (1) Fast Charger, (1) Miter Gauge

- 24" of Rip capacity for ripping 4x8 plywood or OSB sheets.

### 1/2" STUD JOIST DRILL KIT

FLEXVOLT 60-VOLT MAX LITHIUM ION  
CORDLESS BRUSHLESS



- E-clutch engages when a stall is detected, shutting down the tool.

**\$389.99**

DCD460T1

### 4-1/2" - 6" ANGLE GRINDER WITH KICKBACK BRAKE

FLEXVOLT 60-VOLT MAX LITHIUM ION  
CORDLESS BRUSHLESS

Includes:

- (1) Drill, (2) FLEXVOLT™ Lithium Ion Batteries, (1) Fast Charger, (1) Chuck Key and Holder
- (1) Side Handle, (1) Bag



**\$369.99**

DEWDCG414T2

Includes:

- (1) Grinder, (2) Batteries, (1) Fast Charger, (1) Side Handle, (1) 4-1/2" Wheel, (1) 4-1/2" Guard, (1) 6" (150mm) Type 27 Guard, (1) Wrench, (1) Flanges, (1) Kitbag



**\$389.99**

DEWDCS575T2

### 7-1/4" CIRCULAR SAW

FLEXVOLT 60-VOLT MAX LITHIUM ION  
CORDLESS BRUSHLESS

Includes:

- (1) 7-1/4" Circular Saw, (1) 7-1/4" Saw Blade
- (2) 60V MAX\* Lithium Ion Batteries, (1) Fast Charger, (1) Blade change wrench



**\$389.99**

DEWDCS388T2

### RECIPROCATING SAW

FLEXVOLT 60-VOLT MAX LITHIUM ION  
CORDLESS BRUSHLESS

Includes:

- (1) 60V MAX\* Brushless Reciprocating Saw
- (2) 60V MAX\* Batteries, (1) 20/60V MAX\* Fast Charger, (1) Blade, (1) Contractor Bag

**\$449.99**

DEWDCL070T1



### BLUETOOTH LED LIGHT KIT

FLEXVOLT 60-VOLT MAX LITHIUM ION  
CORDLESS/CORDED

- On-board charger with door lock option.



**RECIPROCATING SAWS** **DEWALT**

**CORDED**



4-position blade clamp allows for flush cutting.

~~\$99.99~~ **\$79.99**  
REG. DEWDWE305

**12 AMP RECIPROCATING SAW**



**\$129.99**  
DEWDWE357

**12 AMP COMPACT CODED RECIPROCATING SAW**



**ANGLE GRINDERS**

**DEWALT**

Faster material removal and higher overload protection.



**\$89.99**  
DWE402N

**4-1/2" ANGLE GRINDER**  
120V CORDED

Includes:  
(1) Touch Guard, (1) 2-Position Side Handle



**\$179.99**  
DWE46153

**5" SURFACE GRINDING DUST SHROUD KIT**  
11 AMP CORDED

Includes:  
(1) Grinder, (1) 5" Shroud, (1) 5" Diamond Turbo Wheel, (1) Universal Connector, (1) Bail Handle



**\$249.99**  
DWE46103

**6" TUCKPOINT/CUTTING GRINDER**  
20-VOLT MAX XR LI-ION BRUSHLESS

Includes:  
(1) Grinder, (1) Side Handle, (1) Inner and Outer Flange, (1) 6" Type 27 Guard & 6" Type 1 Guard



**CORDLESS BLOWERS**

**DEWALT**



**\$189.99**  
DCE100M1

**BLOWER - 100 CFM**  
20-VOLT MAX LITHIUM-ION BRUSHLESS

Includes:  
(1) 20V MAX\* 5.0Ah Lithium Ion Battery,  
(1) Standard Charger



**\$189.99**  
DCBL720P1

**BLOWER - 90 MPH, 400 CFM**  
20-VOLT MAX LITHIUM-ION BRUSHLESS

Includes:  
(1) 20V MAX\* 5.0Ah Lithium Ion Battery,  
(1) Standard Charger

FOR A LISTING OF PRODUCTS & INFO  
Farrellequipment.com/powertools

**HOT DEALS!** 



**DEWALT HAMMER DRILL, IMPACT DRIVER, & RECIP SAW PACKAGE**

- 20V 3-Speed 1/2" Hammer Drill
- 20V 1/4" Impact Driver
- (2) 20V High Capacity Li-Ion Batteries (5.0Ah) Charger
- (2) Belt Hooks
- 360° side handle
- Kit Box

**ONLY WHILE SUPPLIES LAST!!!**

**NOW FREE WITH PACKAGE**



20V RECIP SAW DCS380B **2x** 20V LI-ION BATTERIES DCB204-2

**ALL THIS FOR:**

**\$399.99**

DEWDCK299P2

Farrell Equipment & Supply Co., Inc.  
1510 N. Hastings Way  
Eau Claire, WI 54703

PRSRT STD  
U.S. POSTAGE  
**PAID**  
Eau Claire, WI  
Permit No. 1557

**BOSCH**



**1-1/8" Hex Brute Breaker Hammer with Basic Cart & 2 Chisels**

- Breaker Hammer
- Utility Cart
- Narrow Chisels (Point & Flat)

**\$1,599.99**

BOS01-BH2760VCD

**REBAR CUTTER KIT**

BARE TOOL  
\$1799.99  
XCS01Z

**\$2,049.99**

XCS01T1

Includes:  
(1) 5.0 Ah battery, (1) Rapid charger, (1) Tool case



BARE TOOL  
\$1079.99  
XCS02Z

**STEEL ROD FLUSH-CUTTER KIT**

**NEW!**

**\$1,199.99**

XCS02T1

Includes:  
(1) 5.0 Ah battery, (1) Rapid charger, (1) Tool case



**Milwaukee \$499.99**



**1" SDS Rotary Hammer**

MIL01-2712-22

- Faster than corded speed; All day work on one charge.
- Minimizes vibration for maximum comfort.

**GREAT DEALS ON SDS BITS - STOCK UP TODAY!**

| SIZES                  |         |                     |         |                    |         |
|------------------------|---------|---------------------|---------|--------------------|---------|
| 5/32" X 6" SDS Bit     | \$3.75  | 3/8" x 18" SDS Bit  | \$14.99 | 5/8" x 18" SDS Bit | \$21.99 |
| 3/16" X 4" SDS Bit     | \$2.99  | 3/8" x 24" SDS Bit  | \$19.99 | 3/4" x 8" SDS Bit  | \$19.99 |
| 3/16" x 6" SDS Bit     | \$2.99  | 7/16" x 6" SDS Bit  | \$8.99  | 3/4" x 12" SDS Bit | \$24.99 |
| 3/16" x 8-1/2" SDS Bit | \$4.25  | 1/2" x 6" SDS Bit   | \$4.99  | 3/4" x 18" SDS Bit | \$28.99 |
| 1/4" x 4" SDS Bit      | \$2.99  | 1/2" x 12" SDS Bit  | \$9.99  | 7/8" x 8" SDS Bit  | \$24.99 |
| 1/4" x 6" SDS Bit      | \$2.99  | 1/2" x 18" SDS Bit  | \$16.99 | 7/8" x 12" SDS Bit | \$27.99 |
| 1/4" x 8-1/2" SDS Bit  | \$3.99  | 1/2" x 24" SDS Bit  | \$25.99 | 7/8" x 18" SDS Bit | \$32.99 |
| 1/4" x 14" SDS Bit     | \$11.99 | 9/16" x 6" SDS Bit  | \$9.99  | 1" x 10" SDS Bit   | \$26.99 |
| 5/16" x 6" SDS Bit     | \$3.99  | 9/16" x 12" SDS Bit | \$15.99 | 1" x 18" SDS Bit   | \$34.99 |
| 3/8" x 6" SDS Bit      | \$3.75  | 5/8" x 8" SDS Bit   | \$8.99  |                    |         |
| 3/8" x 12" SDS Bit     | \$6.99  | 5/8" x 12" SDS Bit  | \$16.99 |                    |         |

**DEWALT**

Prices subject to change without notice. While supplies last. Some items need additional lead time.

Mon-Friday: 7:00 am - 5:00 pm , Saturdays (EC/LAX Stores Only): 8:00 am - Noon

**EAU CLAIRE**  
715-835-4334  
800-533-0909  
Fax: 715-835-4356  
1510 N. Hastings Way  
Eau Claire, WI 54703

**APPLETON**  
920-903-1985  
Fax: 920-903-8278  
1002 Truman Street  
Kimberly, WI 54136

**LA CROSSE**  
608-796-9300  
888-533-0909  
Fax: 608-796-9435  
508 Monitor Street  
La Crosse, WI 54603

**MADISON**  
608-222-5372  
888-533-7909  
Fax: 608-222-5405  
6809 Mangrove Lane  
Monona, WI 53713

**ROCHESTER**  
507-252-0234  
888-533-8909  
Fax: 507-252-0222  
1635 3rd Avenue S.E.  
Rochester, MN 55904

**WAUSAU**  
715-355-8300  
800-933-5939  
Fax: 715-298-1662  
7405 Commerce Drive  
Weston, WI 54476