

# FARRELL

EQUIPMENT & SUPPLY CO.

**HELPING YOU WORK THROUGH  
THE SUMMER HEAT**



**K770 14"  
GAS SAW**

**HOT DEAL P. 7**



Husqvarna

**CONCRETE FORMING P. 3-4    DECORATIVE CONCRETE    P. 8-9**  
**POWER EQUIPMENT    P. 6-7    SAFETY GEAR & SUPPLIES P. 12-13**

# **YOUR #1 SOURCE**

**FOR CONSTRUCTION EQUIPMENT & SUPPLIES**

**CONTACT FARRELL FOR PRICED COPY!**

**WATER BOTTLES**

**24-Pack 16.4 oz Water Bottles**

WAT1000



**NEW**

*We will deliver to your jobsite! Keep your crew hydrated and working hard all day long.*



**KESON BOX BEAM LEVELS**

**NEW**



**Box Beam Level**

**KSLKB24** 24" Level  
**KSLKB48** 48" Level

**NEW**

*Patented SOLA Focus vial offers 20% magnification to better see the bubble*



**Magnetic Box Beam Level**

**KSLKB24M** 24" Level  
**KSLKB48M** 48" Level

- Features molded hand holds, rubber end caps, single measuring surface, and a strong magnetic hold.

**NEW**

*For the price, these are the best levels for construction in North America*

**78" & 32" Box Beam Level Jamb Set**

KSLKB7832



**Digital Box Beam Level**

**KSLKB24D** 24" Level  
**KSLKB48D** 48" Level

- All the great features of the Keson box beam level, with a water- and dust-resistant digital readout.

**NEW**



**BACKPACK SPRAYER**



**NEW**

**Backpack Concrete Sprayer Kit**

MIL01-2820-21CS

- Instant, constant, & adjustable pressure for ultimate control.

**4 Gallon capacity tanks**

**Interchangeable tanks**

**NO manual pumping**

**M18 battery-powered base**



**+** Replacement Tank for Sprayer Kit

MIL02-49-16-28CS

**WASP/HORNET SPRAY**

**Blast 'Em Wasp/Hornet Killer Spray**

SP857

- Kills wasps, hornets, yellow jackets, flies, & mosquitoes.
- Residual deposit kills returning bugs.



**NEW**



**SHERWIN-WILLIAMS.**

**SERVING THE CONSTRUCTION INDUSTRY  
SINCE 1968**



## EXPANSION FOAM



### Nomaflex Expansion Joints

#### Sizes Available

NOM003	1/2" x 3-1/2" x 5'
NOM004	1/2" x 4" x 5'
NOM005	1/2" x 5" x 5'
NOM006	1/2" x 6" x 5'
NOM1003	1/2" x 3-1/2" x 10'
NOM1004	1/2" x 4" x 10'
NOM1005	1/2" x 5" x 10'
NOM1006	1/2" x 6" x 10'

### Fastflex Rolls



#### Other Sizes Available

MD1002	1/4" x 4" x 100'
MD1002-2	1/4" x 6" x 100'
MD1004	1/2" x 4" x 50'
MD1005	1/2" x 5" x 50'
MD1006	1/2" x 6" x 50'

- A flexible, light-weight, non-staining, closed-cell expansion joint filler.

## FORM-A-DRAIN

### Form-A-Drain System

CALL FOR FULL PALLET PRICING!



#### Lineal Form-A-Drain System

- The 3-in-1 foundation solution that forms footings, creates a drain system, & can vent radon.

FDLN126  
6" x 12'

FDLN128  
8" x 12'



Form-A-Drain  
Corners

FDCN456	6" x 45°
FDCN458	8" x 45°
FDCN906	6" x 90°
FDCN908	8" x 90°



Form-A-Drain  
Couplings

FDXCPL6	6" x 6"
FDXCPL8	8" x 8"



Form-A-Drain  
Outlets

FDOUT46	6" Single Outlet
FDDOF46	6" Double Outlet

## HOPPERS & CHUTES

### Handy Chutes (Elephant Trunk)



GS07

Great for pouring wall forms, basements & block walls, & easy to clean!

### Plastic Hoppers

GS484



36" x 36" x 6",  
8", 12"  
PVC Hopper

GREENSTREAK

### Mix-N-Go Mixer w/ Stand

MQMC3PEA



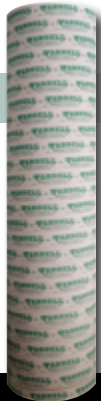
3 cu. ft. Poly Tub Electric Mix-N-Go Mixer w/ Stand

Perfect for small footings & bases.

ASK YOUR SALESMAN FOR PRICES

## SONOTUBES

### Concrete Form Tubes



CALL FOR A QUOTE TODAY!

#### Concrete Form Tube Sizes

8", 10", 12", 14", 16", 18", 20", 24", 36", and 48"!

#### Double Wide Form Tubes

- No blowouts, no tears, and no splits!
- Built with extra wide layers for a more dependable concrete form.

The fast way to pour perfect, cylindrical columns of concrete. Achieve a round column for less than comparable rectangular forms.



CUT TO LENGTH!



ALWAYS IN STOCK!

# STEEL CONCRETE FORMS

MANY SIZES AVAILABLE, CALL FOR A QUOTE TODAY!



### Steel Straight 3-Pocket Forms

- Come standard with a full bull nose and are self-aligning, requiring no time-consuming and non-productive latching, locking, or fitting, providing faster and easier forming.
- All concrete forms are subject to a 4-piece order minimum.

### Straight Forms - 10' Length x 2" Standard Base

Heights: 4", 5", 6", 7", 7-1/2", 8", 9", 10", 11", 12", 13", 14", 15", 16"

### Straight Filler Forms - Standard 5' Lengths

Heights: 4", 5", 6", 7", 8", 9", 10", 11", 12"

### Corner Forms - Outside or Inside Available

Heights: 4", 5", 6", 7", 8", 9", 10", 11", 12"

### Flexible Forms - Standard 5' Lengths

Heights: 4", 5", 6", 7", 7-1/2", 8", 9", 10", 11", 12", 13", 14", 15", 16", 17", 18", 19", 20", 21", 22", 23", 24"

# CONCRETE DOWELS



### Speed Dowels



- Provides a practical dowel alignment method for transferring loads across and managing stress within concrete slab joints.

GSPSD/#4BX	5/8" Dowel Base for 1/2" Rebar
GSPSD/#5BX	3/4" Dowel Base for 5/8" Rebar
GSPSD09/#4TX	5/8" ID x 9" Dowel Tube for 1/2" Rebar
GSPSD12/#4TX	5/8" ID x 12" Dowel Tube for 1/2" Rebar
GSPSD12/#5TX	3/4" ID x 12" Dowel Tube for 5/8" Rebar

### QuicDiamond Flat Plate Dowel System



CALL FOR A QUOTE TODAY!



- Provides excellent & reliable joint stability compared to other systems.

# MINNICH

### Backpack Vibrator



MIN3000

Backpack Vibrator w/  
7" Core & Casing,  
& 1-3/4" Head



### Stinger Vibrator



Stinger 115V  
Concrete Vibrator



Exclusive dealer in Wisconsin,  
GET 5% OFF ALL MINNICH  
electronic vibrators at Farrell!

MIN1005	5' Core, 1-1/8" Head
MIN1007	7' Core, 1-1/8" Head
MIN1010	10' Core, 1-1/8" Head
MIN2007	7' Core, 1-3/8" Head
MIN2010	10' Core, 1-3/8" Head

# CONCRETE SPREADERS

### Concrete Placers w/ Hook



Alum. Concrete Spreader w/ Hook  
Heavy duty aluminum  
blade for exceptional  
toughness.

KRCC905 (19-1/2" x 4")



Gold Aluminum Concrete Kumalong w/ Hook  
Features 60" gold  
anodized aluminum  
handle & foam grip.

KRCC945 (19-1/2" x 4")



Aluminum "Farrell" Concrete Placer w/ Hook  
A high quality  
concrete spreader  
made for experts.

MT10000 (20")



### Permashape Broken-In Trowels

- Broken-in shape reduces ripple marks, & Durasoft handle reduces fatigue.

MT3247	4" x 16"
MT3265	4" x 18"
MT3271	4" x 20"



## LEVELING SCREEDS

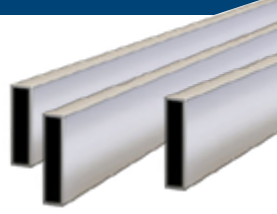
### Aluminum Combo Screeds



- Designed with a sharp edge for cutting and a round edge for floating concrete.

<b>MT13741</b>	1.2 M./ 4 ft. Combo Screed
<b>MT13743</b>	1.8 M./ 6 ft. Combo Screed
<b>MT13744</b>	2.4 M./ 8 ft. Combo Screed
<b>MT13745</b>	3.0 M./ 10 ft. Combo Screed

### Magnesium Screeds



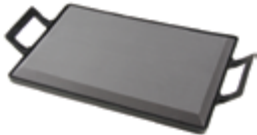
- Made of rust-resistant magnesium that is 30% lighter than aluminum, & made thick to keep its shape.

<b>KRCC608</b>	8' x 1-1/2" x 3-1/2" Magnesium Screed
<b>KRCC610</b>	10' x 1-1/2" x 3-1/2" Magnesium Screed
<b>KRCC612</b>	12' x 1-1/2" x 3-1/2" Magnesium Screed
<b>KRCC614</b>	14' x 1-1/2" x 3-1/2" Magnesium Screed
<b>KRCC616</b>	16' x 1-1/2" x 3-1/2" Magnesium Screed
<b>KRCC620</b>	20' x 1-1/2" x 3-1/2" Magnesium Screed
<b>KRCC417</b>	20' x 2" x 4" Magnesium Screed

## KNEE PROTECTION

### Kneeboards

KRWL069



**EZ-Kneeler**

- A 1-1/2" thick foam cushion provides knees with comfortable support and protection. Made in the USA.

## DUST MASKS

### Respirators



*OSHA & ANSI approved face and lung protection.*

**Half Facepiece Respirator**

3M01-07025  
(6200 - Medium)  
3M01-07026  
(6300 - Large)



3M01-37082  
(7502 - Medium)  
3M01-37083  
(7503 - Large)

**Half Facepiece Respirator**

## DUST-FREE MASONRY SAWS

### Table Saw

*Brick, Pavers, Masonry Stone, & Veneer*

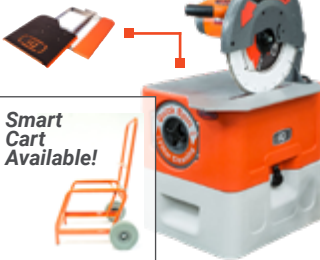
**#iQ360 14" Masonry Saw**

- Tested to capture up to 99.5% of the dust, with no water!
- Cut right where you work, even indoors, with less dust problems.

IQP-IQ360



Includes the #iQ3-RT Rolling Table



Smart Cart Available!



### Tile Saw

*Ceramics, Porcelain, & Marble*

**10" Dry Cutting Tile Saw w/ Integrated Dust Control**

IQP-IQTS244



**CAPTURES 99.5% OF DUST!**

- The best tile saw for professional contractors: this 10" dry cut tile saw saves one hour per day or more in costly setup & cleanup time.

### Power Cutter

*Concrete, Pavers, Brick, & Stone*

**12" Power Cutter w/ Integrated Dust Control System**

- Eliminate dust cleanup, slurry and wet-cutting problems.
- Filter lasts for up to 100 cutting hours.



IQP-IQPC-912



*\*X-STAND sold separately*

IQP-IQTS-XS



# RIDING TROWELS



## Riding Trowels



ALN053300

### #MSP445 5-Bladed Riding Trowel w/ 40HP Kohler Engine

- Higher horsepower, improved torque-converter clutch, & improved weight-to-HP ratio.



MQHNG5

### 5-Blade Riding Trowel w/ 35 HP Briggs & Stratton



**AVAILABLE TO RENT!**

# WHITEMAN POWER TROWELS

## 30"/36" Edger Trowels

**NEW**

MQ5001

**Easily convert from 36" to 30" simply by removing the outer sections of the ring!**



### 30"/36" Edging Trowel w/ GX160 Honda & Quick Pitch Handle

- A versatile tool with a compact design that is ideal for finishing edges in confined areas.

## Power Trowels



**\*Quick Pitch\* or Standard Handles Available**



- Optimally balanced for smooth finishing.

### Power Trowels

MQ2001	36" (GX160)	MQ2000	QP
MQ3001	36" (GX270)	MQ3000	QP
MQ4001	46" (GX270)	MQ4000	QP

# BOMAG CONCRETE EQUIPMENT

## Concrete Compactors

### BVP 18/45 Plate Compactor

- Power, performance and reliability.
- Repair work on roads, construction & landscaping.

BOMBVP18/45



### BT60/4 Rammer w/ GX100 Honda Motor & 11" Shoe

- Engine protection system.
- Self-cleaning air filter housing.

BOMBT60/4

### RAMMER RACK Type II Rammer Rack



RMR-RAMMER RACK-RR2

- Hold the Rammer upright & locked in your truck!



## SOFF-CUT SAWS

## SOFF-CUT BLADES

### Walk-Behind Saws



**X4000 Soff-Cut Saw**  
HUS02-966845504



*Comes with  
dust port!*

- Three blade widths can be used, allowing different joint widths and crack control simultaneously.



**X150 Prowler Gas  
Concrete Saw**  
HUS02-966844801

- Patented low-noise and low-dust blade block enclosure.
- Mechanical blade depth control.



HUS02-542756114

**XL14-3000 13-1/2" Red  
Soff-Cut Blade**



HUS02-589770101

**10 Pack XL6-3000 6" Red  
Soff-Cut Blades**



## FREE SAW WITH DIAMOND BLADES!

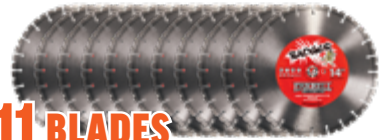


**FREE SAW! ▶ WHEN YOU BUY**

**\$900 VALUE**

**K770 14" Gas Saw**

**One of the best all-around  
power cutters on the market!**



**11 BLADES**

**14" Badger  
Diamond Blades**

## CORE DRILLS

### Core Drilling Rigs



**DMS 180  
Core Drill**



HUS07-966916101

**DMS 240  
Core Drill**



HUS07-965173601

**DIAMOND CORE BITS AVAILABLE AT FARRELL!**

## CONCRETE SAW

### Walk-Behind Concrete Saw



HUS07-967621302

**FS 3500 G Concrete Saw  
w/ 37 HP Kohler**

- A self-propelled floor saw ideal for small to medium patch & service applications.

**26" Millennium  
Wet Diamond Blade**



HUS01-542758673

**HIGHEST  
QUALITY**

**26" Blue 200B Wet Cured  
Concrete Diamond Blade**



HUS01-773266

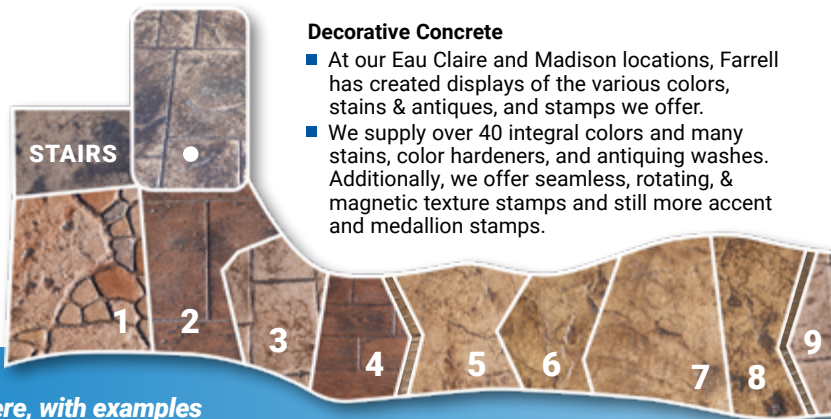
**BEST  
SELLER**

# DECORATIVE CONCRETE

## Decorative Concrete Display

All concrete is sealed with 1 coat of TK AS-1 & 1 coat of TK Bright Kure-N-Seal

Our concrete display in Eau Claire is pictured here, with examples of the products used listed below.



### Decorative Concrete

- At our Eau Claire and Madison locations, Farrell has created displays of the various colors, stains & antiques, and stamps we offer.
- We supply over 40 integral colors and many stains, color hardeners, and antiquing washes. Additionally, we offer seamless, rotating, & magnetic texture stamps and still more accent and medallion stamps.

### Integral Colors



25 lb. Bag Integral Color



SOL238	#238		(ex. 7)
SOL242	#242		(ex. 21)
SOL288	#288		(ex. 6)
SOL306	#306		(ex. 17)
SOL338	#338		(ex. 2)
SOL366	#366		
SOL385	#385		
SOL413	#413		
SOL417	#417		
SOL489	#489		
SOL492	#492		
SOL750	#750		(ex. 30)
SOL755	#755		
SOL775	#775		
SOL920	#920		

### EZ-Accents



1 Gal. EZ-Accent WB Acrylic Stain

PRO75-AC700	Black	(12, 15)
PRO75-AC705	Mission Brown	(15, 23)
PRO75-AC706	Pinto	(12)
PRO75-AC708	Rust	
PRO75-AC709	Colorado	(23)
PRO75-AC710	Charcoal	
PRO75-AC711	Juniper	
PRO75-AC712	Sandstone	(15)
PRO75-AC713	Sedona	(23)
PRO75-AC714	Cimarron	(15)
PRO75-AC715	Turquoise	(12, 23)
PRO75-AC716	Spanish Buff	
PRO75-AC717	Buckskin	(12, 15, 23)
PRO75-AC719	Slate	
PRO75-AC720	Stone Gray	(12, 23)

### EZ-Tiques



3 lb. Pail EZ-Tique

TQ615	Midnight Gray		(ex. 19)
TQ630	Pueblo		(ex. 25)
TQ635	Java		(ex. 13)
TQ641	Walnut		(ex. 3)
TQ700	Black		(ex. 10)

Many more colors available!

### Color Hardeners



60 lb. Pail Color Hardener

CH605	Mojave		(ex. 22)
CH610	Mocha		(ex. 8)

Many more colors available!

# RESURFACERS

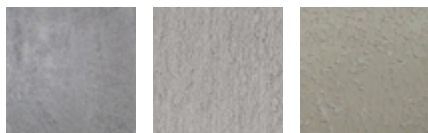
### Pro-Surfacer

Use for any horizontal or vertical surfaces needing thin concrete restoration.



50 lb. Bag Resurfacer

PRO96-PRO-SURFACE (Gray)  
 PRO96-PRO-SURFACE (White)



Troweled      Brushed      Sprayed

- A just-add-water, high strength, polymer concrete overlay.
- This dynamic cementitious blend is designed to restore, repair, & resurface old, stained, & cracked concrete

### Stampable Overlay



PRO96-PRO-STAMP

50 lb. Bag Stampable Overlay

- Use this to transform plain gray concrete into beautiful decorative & textured finishes that resemble slate, tile, wood, etc.



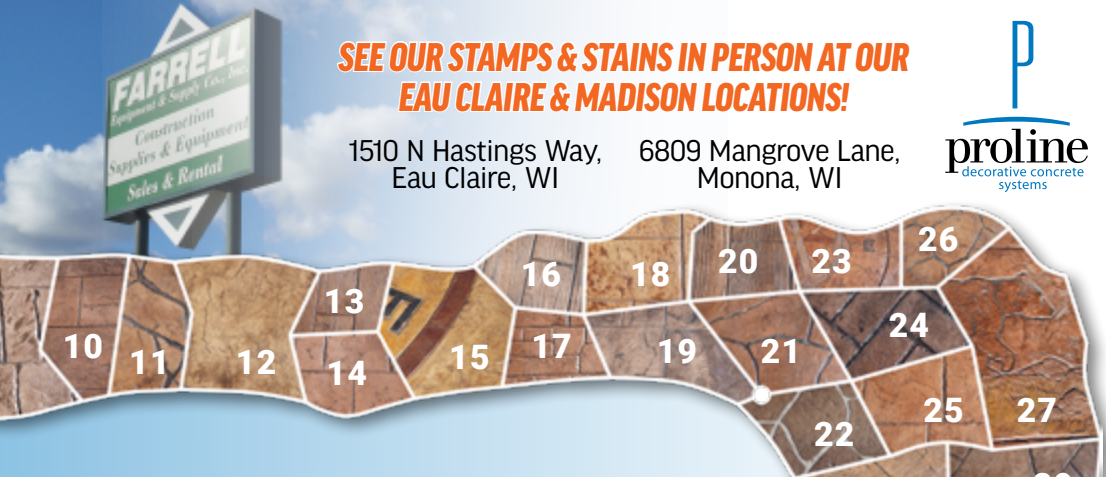


# DECORATIVE CONCRETE

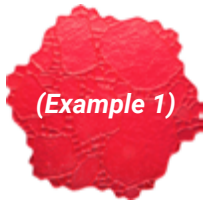
**SEE OUR STAMPS & STAINS IN PERSON AT OUR  
EAU CLAIRE & MADISON LOCATIONS!**

1510 N Hastings Way,  
Eau Claire, WI

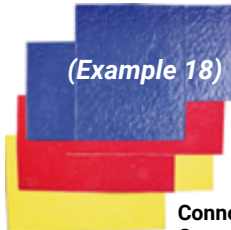
6809 Mangrove Lane,  
Monona, WI



## Decorative Stamps



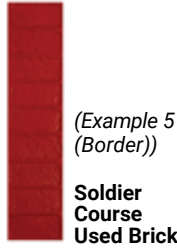
Grand Garden Stone



Connors  
Quarry Stone



Sedona  
Flagstone  
Magnetic  
Stamp Set



Soldier  
Course  
Used Brick

## Accent Stamps



(Example 27)



Ask your salesman for  
more information!

## Medallion Stamps

Other stamps  
displayed  
include the  
Aztec  
Medallion &  
Fire Rescue  
Medallion



**CALL TO SEE MORE OPTIONS OR TO GET YOUR PRICING!**

# INDUSTRIAL SPRAYERS

## Metal Sprayers



CH1949-01  
#1949 3.5 Gal. Red  
Metal Sprayer



CH1949  
FARRELL #1950  
3.5 Gal. Red Metal  
Sprayer

Farrell #1950 includes  
an extra-durable hose!

## Plastic Sprayers

Tanks are designed specifically  
to hold acid stains.



CH2224  
2 Gal. Plastic  
Acid Sprayer



CH2279  
3 Gal. Plastic  
Sprayer

- Compatible with most industrial chemicals.
- 36" brass wand, nozzle & shut-off Lock-on feature.



# DRILL BITS



## Full Head Carbide Bits



### Bulldog Xtreme Full Head Carbide Bits

*These last 4X as long in concrete with rebar, due to its 100% full-carbide tip design and proprietary diffusion-bonding tech.*



**BOSCH**

### BIT SIZES AVAILABLE

BOS03-HCFC2001	5/32" x 6"
BOS03-HCFC2011	3/16" x 6-1/2"
BOS03-HCFC2012	3/16" x 8-1/2"
BOS03-HCFC2041	1/4" x 6-1/2"
BOS03-HCFC2042	1/4" x 8-1/2"
BOS03-HCFC2061	3/8" x 6"
BOS03-HCFC2064	3/8" x 12"
BOS03-HCFC2067	3/8" x 18"
BOS03-HCFC2081	1/2" x 6"
BOS03-HCFC2084	1/2" x 12"
BOS03-HCFC2087	1/2" x 18"
BOS03-HCFC2102	5/8" x 8-1/2"
BOS03-HCFC2103	5/8" x 12"
BOS03-HCFC2104	5/8" x 18"
BOS03-HCFC2223	3/4" x 8"
BOS03-HCFC2224	3/4" x 10"
BOS03-HCFC2227	3/4" x 18"
BOS03-HCFC2244	7/8" x 10"
BOS03-HCFC2245	7/8" x 12"
BOS03-HCFC2247	7/8" x 18"
BOS03-HCFC2263	1" x 10"
BOS03-HCFC2267	1" x 18"

# BOSCH ROTARY HAMMERS

## SDS-Plus Rotary Hammers



BOS01-11255VSR

### 1" SDS D-Handle Rotary Hammer

- From anchoring to large material breaking, this versatile, handy tool can get the job done.



BOS01-RH328VC

### 1-1/8" L-Shaped SDS Rotary Hammer

- Features the 360° auxiliary handle, integral clutch, multi-function selector, & var. 3-speed trigger.



BOS01-RH540M

### 1-9/16" SDS-Max Rotary Hammer

- Offers 6.1 ft.-lbs. of impact energy, up to 20% more than other combo rotary hammers.



**BOSCH**

**(2) 8.0Ah Batteries Included!**



BOS01-GBH18V-26DK24

### 1" SDS Brushless D-Handle Rotary Hammer Kit

**GET A FREE**

Dust Collection Attachment with BOS01-GBH18V-26DK24



## HEPA Dust Extractors & Attachments

### Dust Extractors

**HEPA filters included.**



BOS01-VAC090AH

### 9 Gal. Wet/Dry HEPA Dust Extractor



BOS01-VAC140AH

### 14 Gal. Wet/Dry Dust Extractor



**BOSCH**

- These vacs come with the best in class combo of air flow and suction power, making them ideal for dust control.
- Automatic filter cleaning system cleans the filter every 15 seconds, ensuring it runs at max. efficiency.

### ⊕ ATTACHMENTS



BOS02-HDC100

### SDS-Plus Depth Control Dust Extraction Unit

HDC200 HDC250

Dust Collection Attachment



## MITER SAWS

**DEWALT**

DEWDWS780

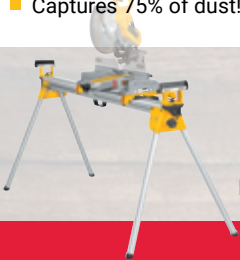
### 12" Sliding Miter Saw

- Provides adjustment-free cut line indication for better accuracy.
- Captures 75% of dust!



DEWDWX723

**Heavy Duty Stand**



**Makita**

MAK01-LS1019L

### 10" Dual-Bevel Slide Miter Saw

- Features unique 2-Steel Rail Sliding System.
- Less weight and compact design set it apart.



MAK01-WST06

**Miter Saw Stand**



## TABLE SAWS

*All saws equipped with patented safety system that stops on contact with flesh!*



SAW01-JSS-MCA

- Includes a pedal-actuated folding stand.
- The 8" wheels can act as a dolly.

**10" Jobsite Saw w/ Mobile Cart & Fence System**



SAW05-CNS175

- Uncompromising quality and industry-leading dust collection.
- 1.75HP, 110V

**10" Contractor Saw  
SAW ONLY**



SAW04-PCS175

- Precise performance & safety optimized for the hobbyist or home shop.
- 1.75HP, 110V, Single Phase

**10" Professional Cabinet Saw  
SAW ONLY**

SAW03-ICS31230

- Most powerful and best quality 10" saw on the market.
- Includes a 52" Industrial T-Glide fence assembly.
- 3HP, 230V, Single Phase

**Industrial Cabinet Saw  
SAW ONLY**

## POWERMATIC WOODWORKING

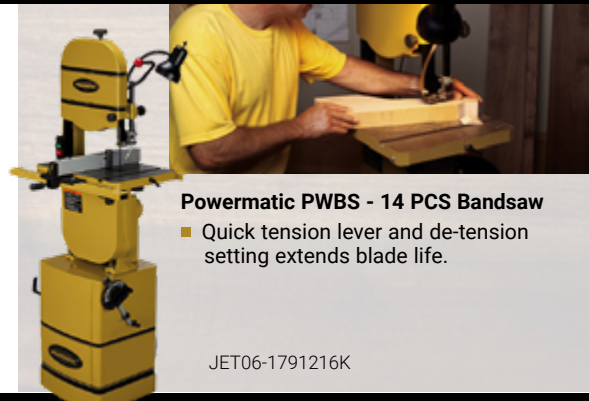
*Packed with features that can handle the most demanding jobs.*



### Powermatic 31 Belt / Disc Sander

- The table mounted on the 6" x 48" belt sander can be used vertically, horizontally, or angled.
- The Integral Dual Port keeps both belt and disc portions clean.

JET06-1791291K



### Powermatic PWBS - 14 PCS Bandsaw

- Quick tension lever and de-tension setting extends blade life.

JET06-1791216K

# HYDRATION STATION

## Water Coolers



GOT-FG1683  
ISORAN  
3 Gal. Cooler



GOT-1787621  
3 Gal. Water Cooler

## Accessories

*Fasten a water cooler to any truck bed or table!*



GOT-FG164002331  
Watercooler Mounting Bracket



NSCUP  
200 pc. 4 oz. Cone Water Cup

# FIRST AID SUPPLIES

## First Aid Kits



PK06080  
(25 Man)

PK06450  
(50 Man)

Include: adhesive strips, bandages, gauze pads, gauze bandages, adhesive tape, eye pads, exam gloves, wipes, burn cream, cold packs, etc.

## Bandages



- PK1000** 100 pc. Box 3/4" x 3" Plastic Adhesive Strips
- PK1800** 100 pc. Box 1" x 3" Heavy Woven Fabric Adhesive Strips
- PK1900** 100 pc. Box Knuckle Bandages
- PK1990** 100 pc. Box Fingertip Bandages

## Eye Flushing



PK7600

*Everything you need for basic eye injuries.*

# HARDHATS



**Americana Vented Hardhat**

- ANSI/ISEA Z89.1, Type 1, Class C
- Vents to increase circulation & keep your head cool and comfortable.

- ERB06-19450 Hi-Viz Lime
- ERB06-19451 White
- ERB06-19456 Blue



**Americana Hardhat**

- ANSI/ISEA Z89.1, Type 1, Class C, E & G
- Vents increase circulation & keep your head cool and comfortable.

- ERB06-19360 Hi-Viz Lime
- ERB06-19361 White
- ERB06-19362 Yellow
- ERB06-19364 Red
- ERB06-19365 Hi-Viz Orange
- ERB06-19366 Blue

# HI-VIZ GEAR

## Safety Vests



**Class 2 Lime Mesh Safety Vest**  
L, XL, 2XL, 3XL

**Class 3 Lime Mesh Safety Vest**  
S/M, L/XL, 2X/3X, 4X/5X

## Hi-Viz T-Shirts



**Hi-Viz Yellow Class 2 T-Shirt**  
M, L, XL, 2XL, 3XL

## Hi-Viz Sweatshirts



**Hi-Viz Lime Hooded Sweatshirt**  
L, XL



# KNEE PROTECTION

## Knee Pads

*Comfortable & flexible enough that you forget you're even using them.*



SEL-96111  
**Ultra Flex III Knee Pads - Black**



SEL-96110  
**Ultra Flex III Knee Pads - Gray**

## JOBSITE LIGHTING

### Work Lights



CCI102-L14

#### 1,000W Twin Head Work Light

- Equipped with adjustable & extendable (telescoping) tripod, which goes up to 68" tall.

CCI102-L33

#### 500W Work Light



*UL-listed for outdoor use.*



### Wobble Lights



WOBWL400MH

#### 400W Metal Halide Wobble Light (110' Area)

- The only patented self-righting work light.
- The most cost-effective and high performing jobsite light solution for construction.



WOB052197

#### 400W Metal Halide Replacement Bulb



WOBWL52230

#### 180° Arc Reflector Shield

## JOBSITE STORAGE

### Gang Boxes



#### Gang Box

- KN060 60"x24"x24"
- KN069 60"x24"x36"
- KN089 60"x24"x48"



KN4830-D

#### Gang Box (48" x 30" x 35") w/ Quick Access Drawer

### Truck Boxes



KN127

#### Aluminum Saddle Box



KN117

#### Alum. Saddle Box (L)

- The most popular truck storage option due to easy installation, max. bed clearance & durability.

**CALL TO SEE OUR FULL LINE OF GANG & TOOL BOXES!**

## BOLLARDS & CURBS

### Bollard Covers

POS-CL1386-A YELLOW/RED

#### 7" x 60" Yellow w/ Red Tape Post Guard Cover

- Guaranteed to resist fade for 6 years!
- HDPE plastic absorbs impact.

### Parking Curb

POS-ENC16101

(6' L x 6" W x 4" H)



#### 6' Park-It Parking Curb

- Made from 100% recycled rubber, and safer and more durable than concrete or plastic.
- 4" high rubber curb helps reduce damage to low cars.
- Will not chip, crack, warp or fade, while being 90% lighter than a standard concrete curb!

**MORE COLOR OPTIONS ARE AVAILABLE TO ORDER!**



**COME IN TO SEE OUR FULL RANGE OF SAFETY & WARNING PRODUCTS!**

## CAULK SEALANTS

### Dymonic FC Caulk

Tubes - 11 oz.

- 19 stock colors available!
- 30 per case.

Sausages - 20 oz.

- 15 stock colors available!
- 15 per case.



**FOR COLOR SAMPLES OR TO GET A QUOTE, STOP IN OR CALL TODAY!**

- Dymonic FC is a durable, flexible sealant offering excellent performance in moving joints and amazing adhesion once fully cured.

### Dymeric Caulk

**TREMCO**

Use for pre-cast tilt-up concrete, masonry, & exterior insulation.

TR5511



1-1/2 Gal. Dymeric 240 FC

- Includes a tintable base, curative packet, and 70 standard colors.

Many Color Packs Available!

Beige	Limestone
Anod. Aluminum	Natural Clay
Light Bronze	Ivory

### Vulkem 45 SSL

Vulkem 45 SSL Caulk  
28 oz. Tube  
For sidewalks, pool decks, plazas, & floors.

TR3100



### Dymonic 100

Dymonic 100 Caulk  
10 oz. Tube  
Movement capability of +100/-50%

TR3200



**TREMCO**

## JPW PLANERS

JET06-722130

**JWP-13BT**  
13" Bench Top Planer

- Helical Style Cutter head has 6 rows of 24 inserts.



JET06-722155

**JWP-15BHH 15" CS**  
Planer w/ Helical Hand

**JPW**  
INDUSTRIES



## FESTOOL WORKSHOP

Mobile Workshop

**FESTOOL**

**NEW**



FES01-203802

#MW1000 Mobile Workshop  
#203454 & #203457

- A customizable workshop that you can transport, set up, & breakdown in a flash on any jobsite.

## DEHUMIDIFIERS

### Floor Dryer

DRIF351

**Sahara Pro X3**  
Floor Drying Fan

- Features three speed settings.
- Low power draw - link up to 4 on 1 outlet!

Produces 2700 CFM of airflow



### HEPA Air Scrubber

DRIF284

**HEPA 500 Air Scrubber**

- Covers up to 1,000 cu. ft.
- Variable CFM - up to 2000 CFM per 15-amp circuit.
- Stackable, lightweight, and easily transportable.

Captures 99.97% of air particles.



# OUTDOOR POWER TOOLS

## Kombimotor Power Units

Don't see what you need? Call your local Farrell for more lawncare tools.

**DISPLACES:**  
27.2 CC  
**POWER:**  
0.8 KW



STL10-KM56RCE

**DISPLACES:**  
28.4 CC  
**POWER:**  
0.95 KW



STL10-KM90R

**DISPLACES:**  
36.3 CC  
**POWER:**  
1.4 KW



STL10-KM130R

- The STIHL Kombimotor system lets you use one reliable, low-emission engine for all of your lawncare tools!
- They will handle a wide range of jobs, from trimming & cutting to edging & clearing.

## Attachments



STL10-4140-200-0332

### #FS-KM Line Head Trimmer Attachment

- Turn your KombiMotor into an effective lawn trimmer, with superior maneuverability.



STL10-4606-740-5001

### #BG-KM Blower Attachment

- Clear outdoor areas with an air velocity of 121-157 mph.



STL10-4601-740-5001

### #BF-KM Tiller/Cultivator Attachment

- Ideal for flower bed rejuvenation & mixing up the soil.



STL10-4182-200-0070

### #HT-KM Pole Pruner Attachment

- Clear branches & shrubs with this 12" bar & chain.



# EROSION CONTROL



## Silt Sock

**Silt Sock**  
EROSION CONTROL PRODUCTS



### SIL1000

#### 8" x 20' Silt Sock

- A cost effective, easy to install, & reusable solution to soil loss on the jobsite.

## Silt Fence

13 Stakes, 3' x 100' Roll



MP1000

MP2000 (Wis. DOT)

Save money using superior quality silt fence from Farrell!

# WHEELBARROWS

## Plastic Tub Wheelbarrow



BRE-BW6S

6 cu.ft. Plastic Tub w/ 6" Tire



## Steel Tub Wheelbarrow



ASM6T22BB

6 cu.ft. Steel Tub w/ Tough Air Tire

- The professionals' choice for superior quality, value and performance.



## Poly Tub Wheelbarrow



ASMP575T22BB

5-3/4 cu. ft. Poly Tray w/ Tough Air Tire

**PRICES VALID: Jul. 15 - Aug. 16, 2019**

**FOR A LISTING OF PRODUCTS AND INFO**  
Farrellequipment.com

## DID YOU KNOW? FARRELL OFFERS PAPERLESS BILLING

FOR A LIMITED TIME!  
SIGN UP FOR PAPERLESS BILLING AND YOU WILL RECEIVE A

**FARRELL SHIRT!**



SIGN UP ONLINE [bit.ly/farrellpaperless](http://bit.ly/farrellpaperless)

CALL YOUR SALESMAN OR VISIT YOUR LOCAL FARRELL STORE TO GO GREEN!

1510 N. Hastings Way  
Eau Claire, WI 54703



PRSRT STD  
U.S. POSTAGE  
**PAID**  
Eau Claire, WI  
Permit No. 1557

## UPCOMING DRAGON SCREED DEMOS!

**FARRELL is hosting demonstrations of the DRAGON SCREED in action at select locations!**



Wausau  
July 26

Eau Claire  
August 2

Madison  
August 9

### DEMO ONLY DEAL!

Purchase a complete Dragon Screed rig for & get a **FREE** MAX Rebar Twintier!



**\$2,700**  
VALUE!

**Pays for itself in saved labor & time in the first 200-yard pour!**

### Trade Customs

If any errors or misprints have escaped our checkers and printers, we are not responsible for them, and they are subject to our correction. All information contained in this catalog, pertaining to strengths and proper working loads of material, tools or machines is derived from information compiled by the manufacturers for the convenience of the buyer. We assume no responsibility for the accuracy of this information. We are not responsible for printing errors in prices. Prices subject to change at any time. Illustrations are subject to modification. All references in this catalog are for description only and are not representations or warranties of any kind or nature. Copyright © 2019 by Farrell Equipment & Supply, Inc.

**7 LOCATIONS • M - F : 7:00 am - 5:00 pm • SATURDAYS (EC/LAX Stores Only): 8:00 am - Noon**

**EAU CLAIRE**  
715-835-4334

**APPLETON**  
920-903-1985

**LA CROSSE**  
608-796-9300

**MADISON**  
608-222-5372

**ROCHESTER**  
507-252-0234

**ST. PAUL**  
651-756-8932

**WAUSAU**  
715-355-8300

**CONTRACTORS' EQUIPMENT • POWER TOOLS • CONSTRUCTION SUPPLIES**